



Amador County CWPP Town Hall Meeting



What is a Community Wildfire Protection Plan?

Healthy Forest Restoration Act (HFRA) of 2003

- Increase hazardous fuels reduction on federal lands
- Prioritize protection of communities and watersheds from wildfire
- Create framework for CWPPs
- Requires federal agencies to prioritize areas identified by an individual CWPP
- Influence how additional federal funds may be distributed for projects on non-federal lands

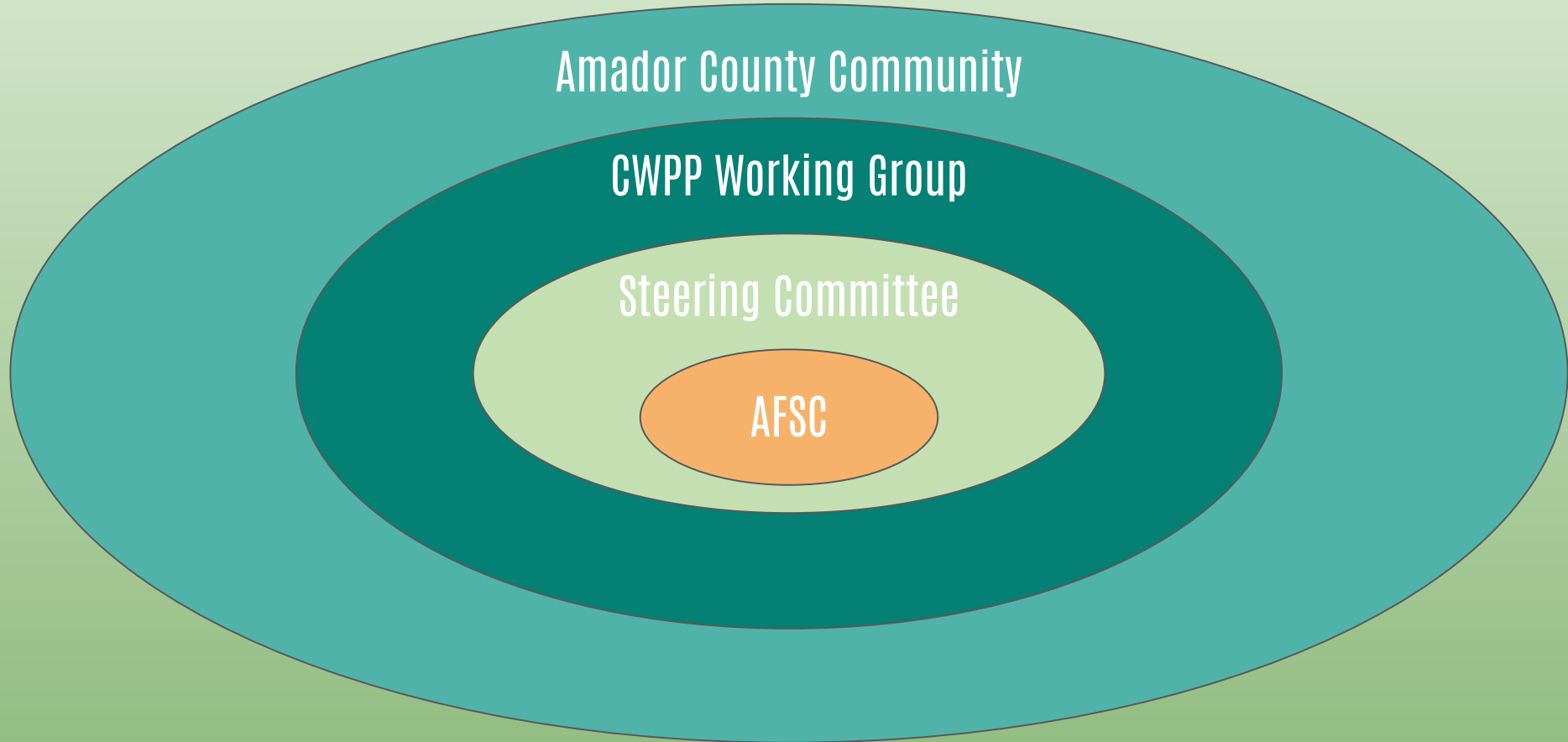
Minimum requirements

- Local and regional collaboration
- Identify and prioritize areas for wildfire risk reduction projects
- Identify strategies for reducing structural ignitability

What is a CWPP?

- Are non-binding, non-enforceable, volunteer-only
- Provides an updated fire hazard assessment for the area
- Builds culture of collaboration
- Creates a list of next-step actions and priorities
- **Opens doors for funding**
- Shift culture around wildfire readiness to one of action by all

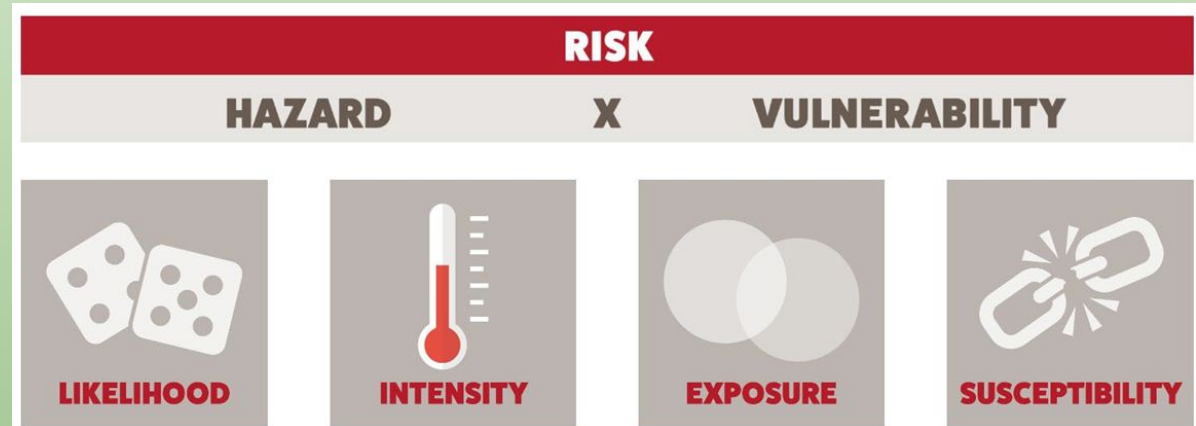


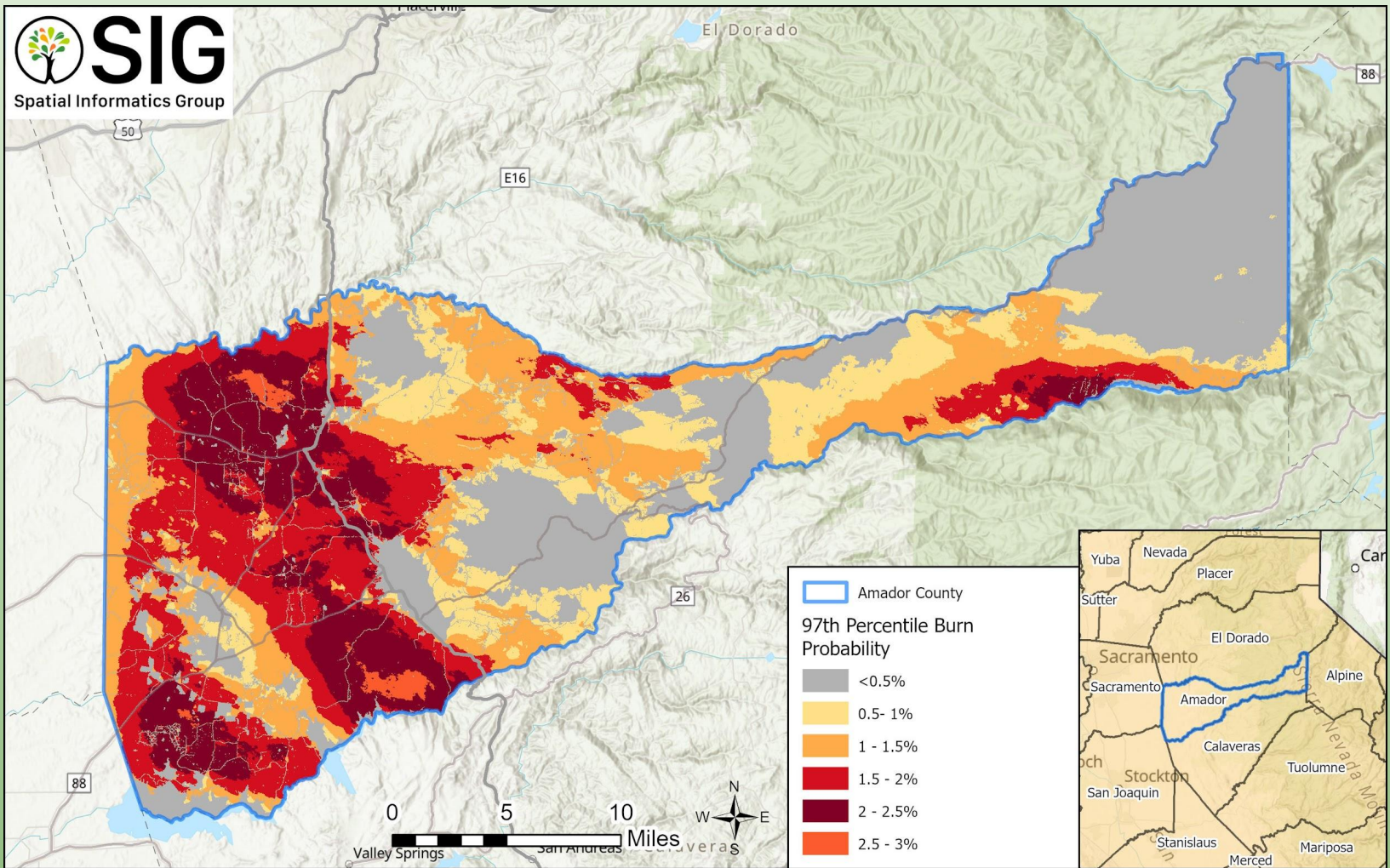


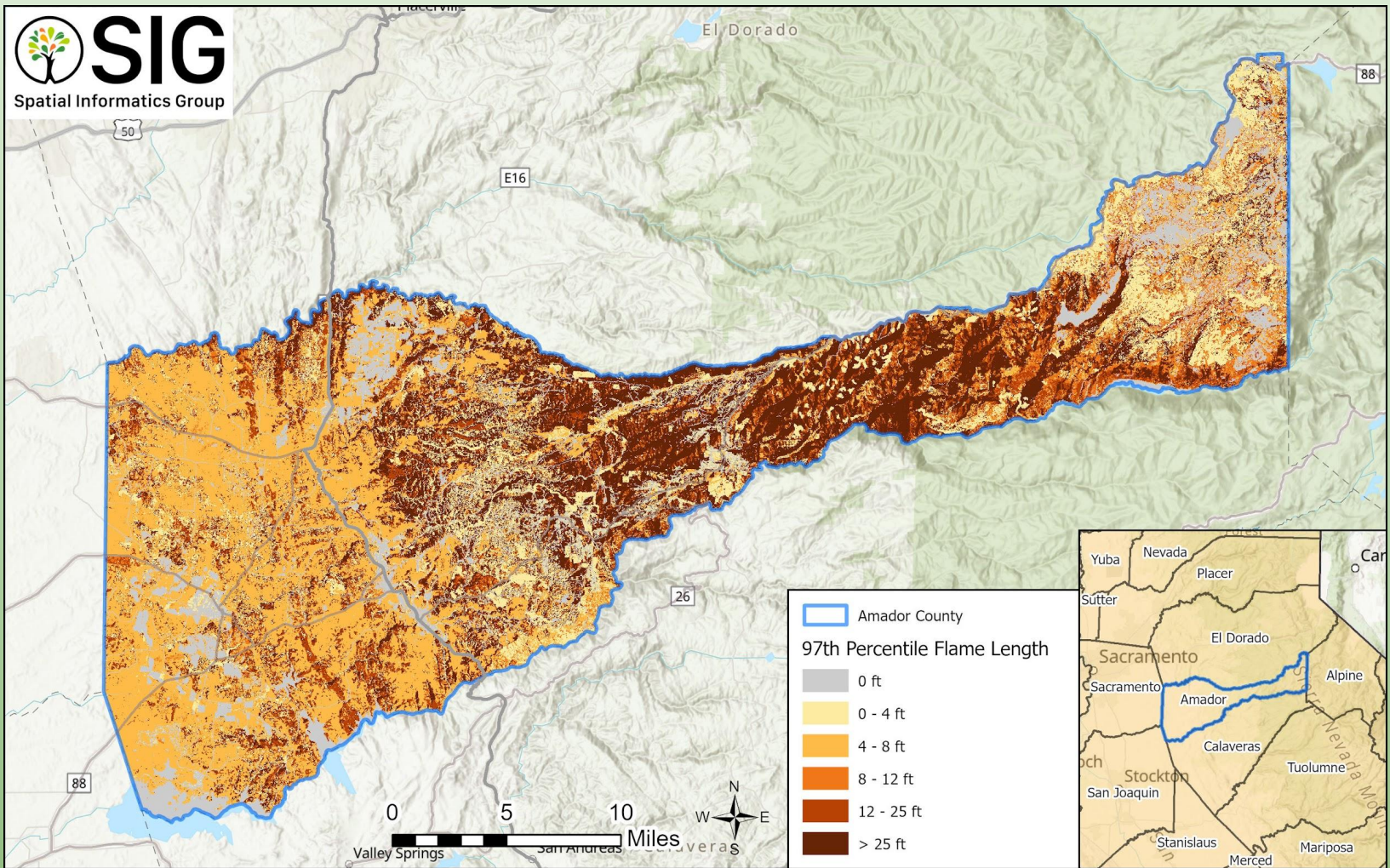
1. Protect Life and Property through targeted fuel treatments, defensible space, and home hardening.
2. Safeguard Critical Infrastructure and Natural Resources including transportation corridors, utilities, watersheds, and cultural assets.
3. Promote Cross-Jurisdictional Collaboration across public, private, and tribal lands to achieve landscape-scale resilience.
4. Advance Data-Driven Decision Making by using quantitative wildfire risk modeling to prioritize treatments and funding investments.
5. Strengthen Community Preparedness and Recovery through public education, evacuation planning, and coordination with emergency management.
6. Ensure Long-Term Sustainability by aligning projects with maintenance, monitoring, and adaptive management frameworks.

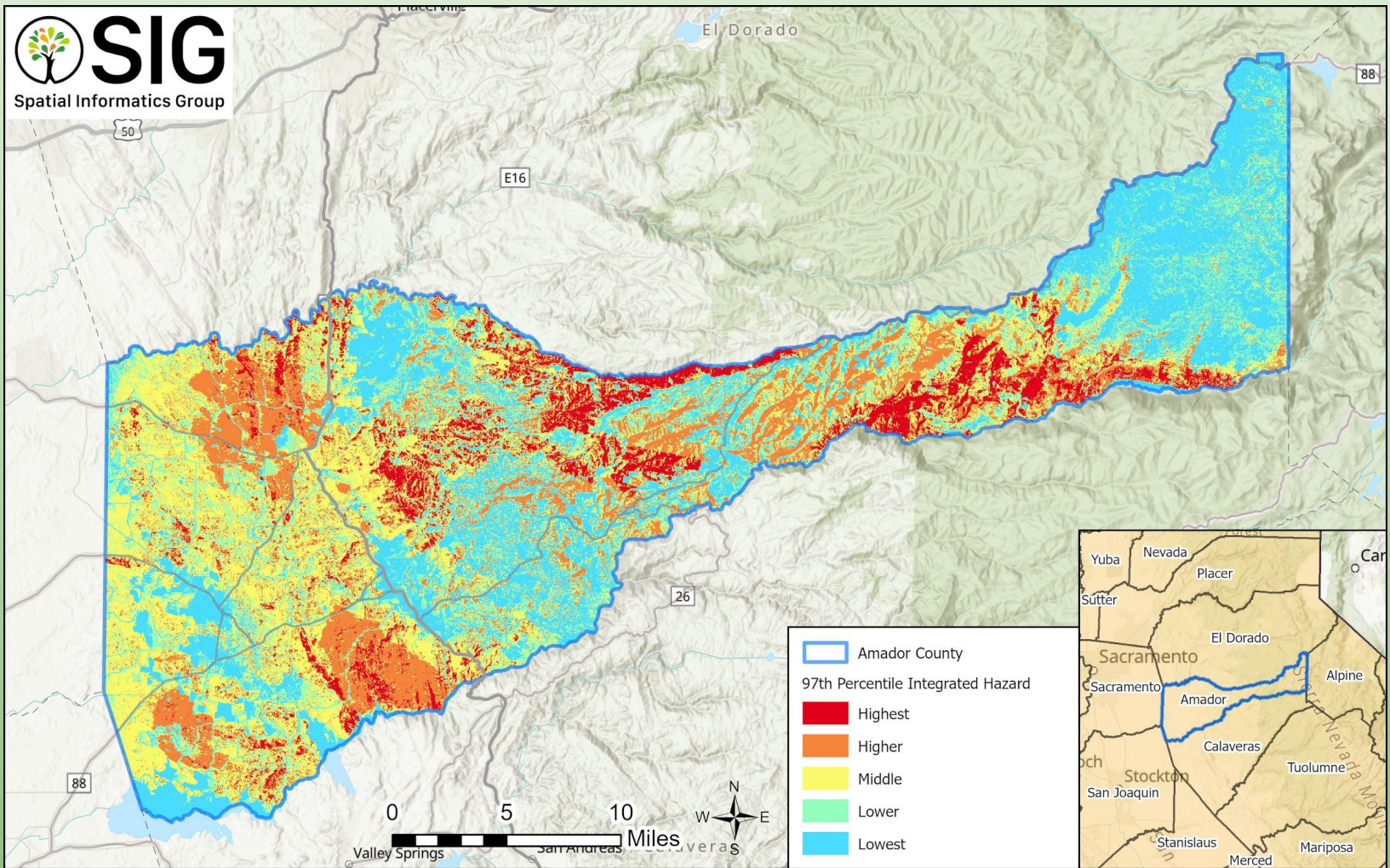
Values, Resources, and Assets at Risk

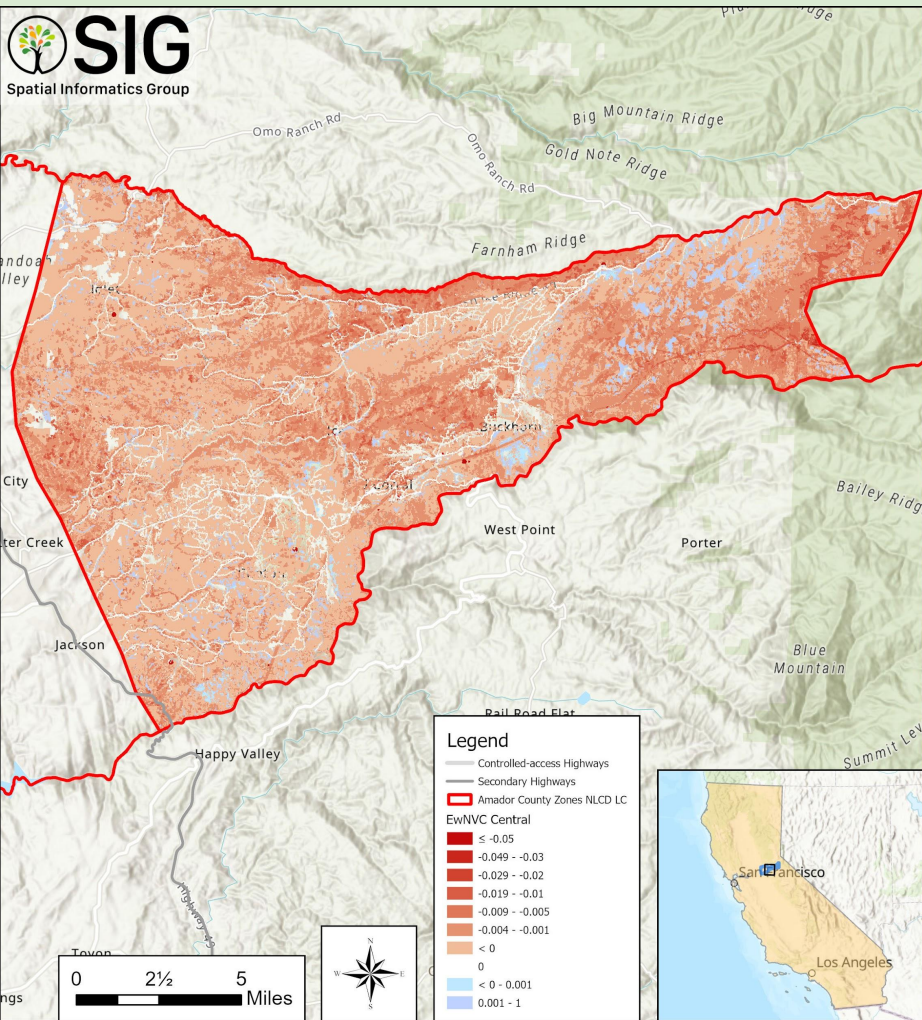
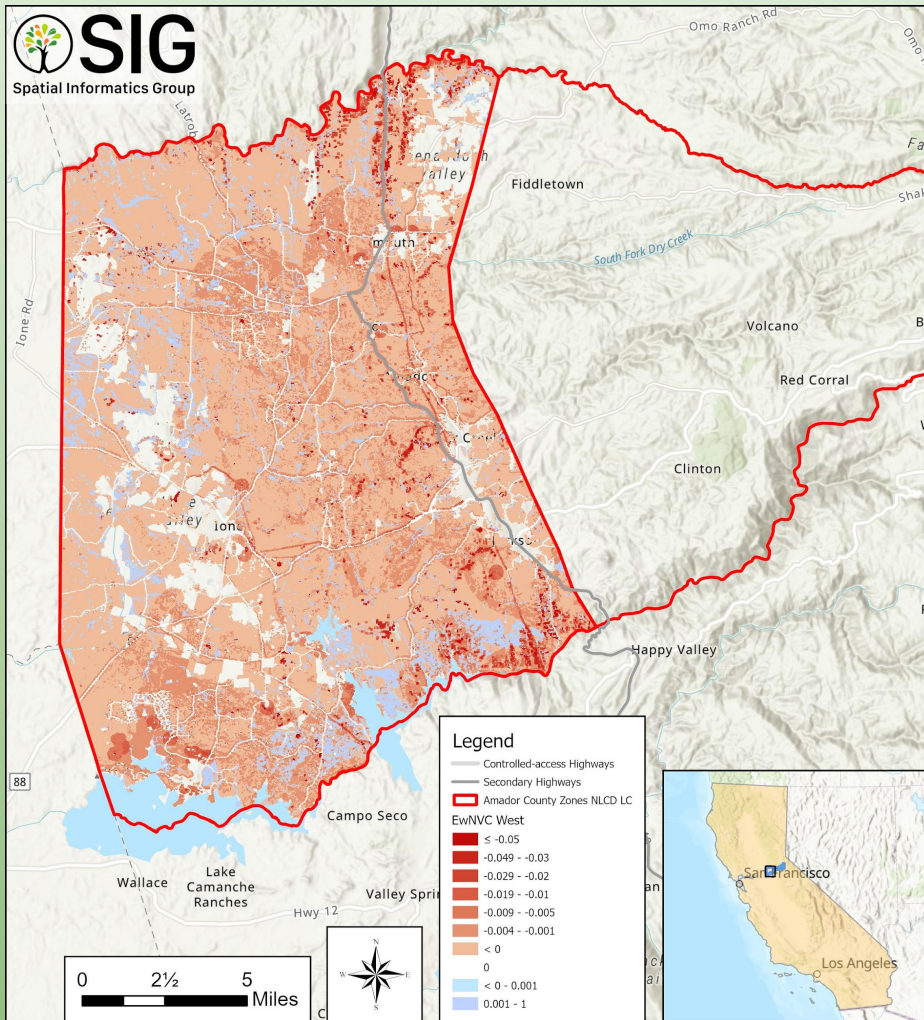
- Human lives
- Properties/Structures/
Infrastructure
- Businesses
- Agriculture
- Habitats and species
- Water quality and supply
- Recreational sites
- Cultural sites
- Historic sites

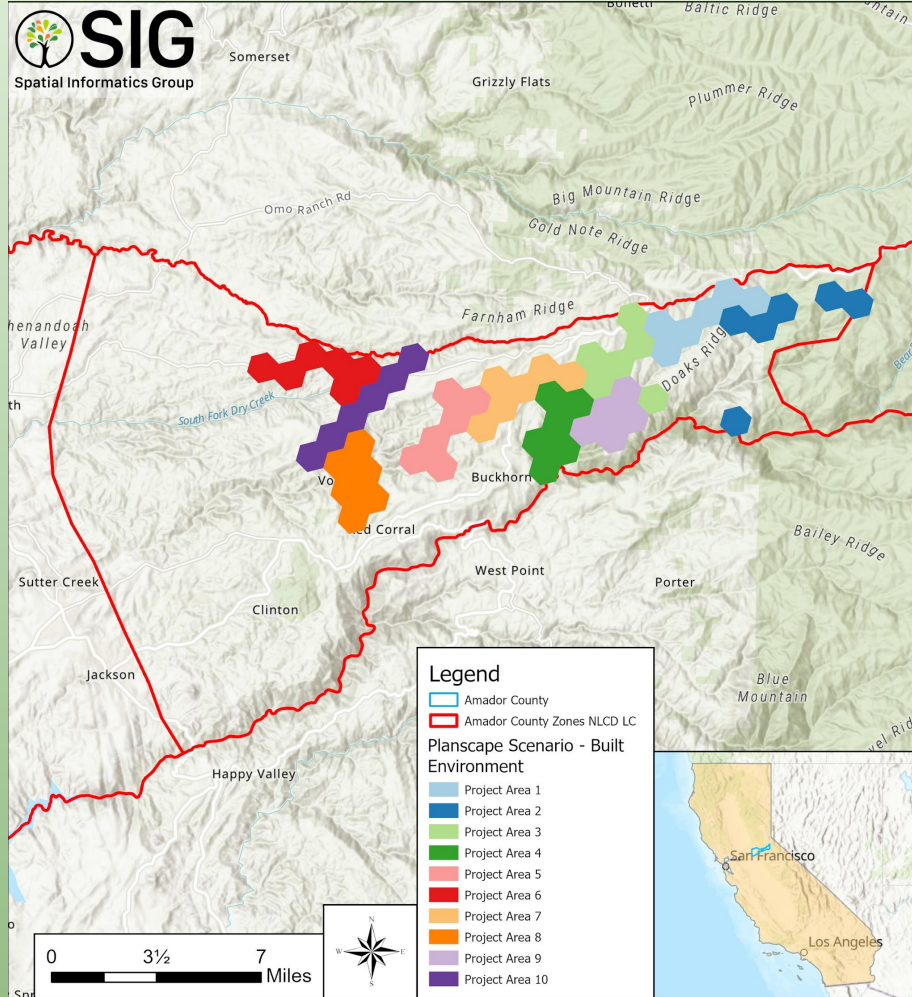
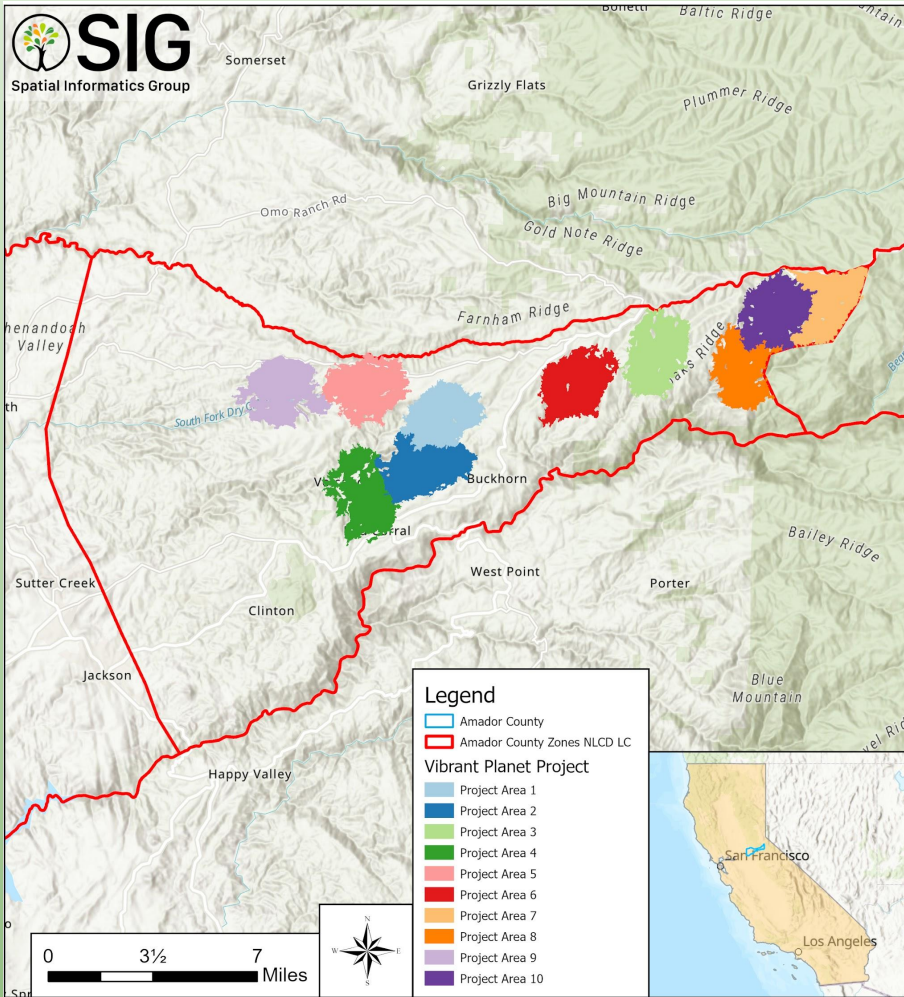












Amador County CWPP - GIS Data



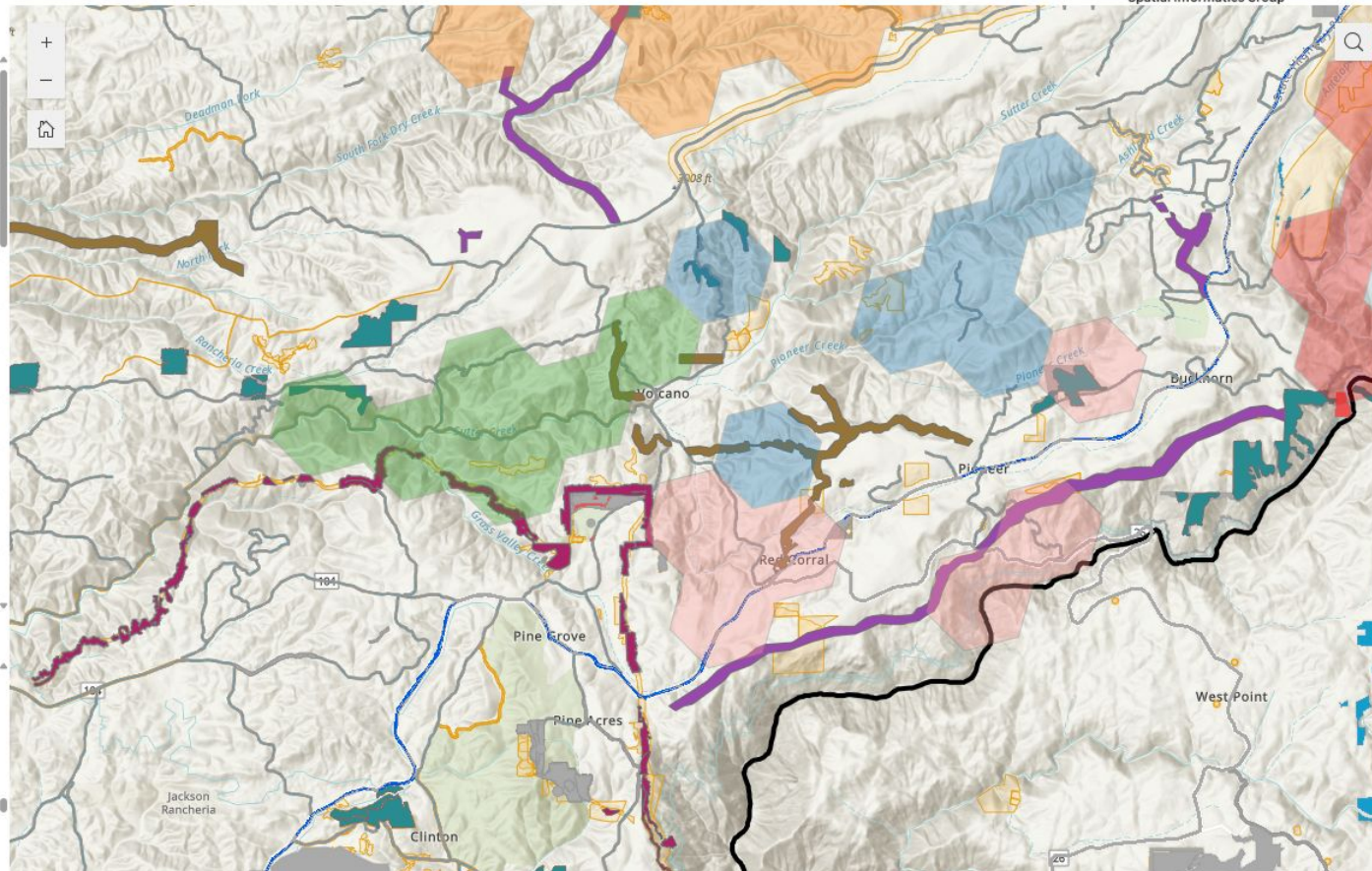
Toggle Layers

- CALFIRE AEU Consensus Treatments _ South
- Vibrant Planet
- Planscapes Scenarios
- Wildlife
- Probability of High Intensity Fire
- Built Environment
- Treatments
- EwNVC Amador CWPP
- Administrative Boundaries
- Wildland Urban Interface
- LAFCO - Fire Protection Districts

Legend

ProjectTyp,Status

- Community Fuel Break, Approved and Planned
- Community Fuel Break, Completed
- Community Fuel Break, Proposed
- Forest Health, Completed



Multi-Level Public Engagement: Digital & In-Person Approaches



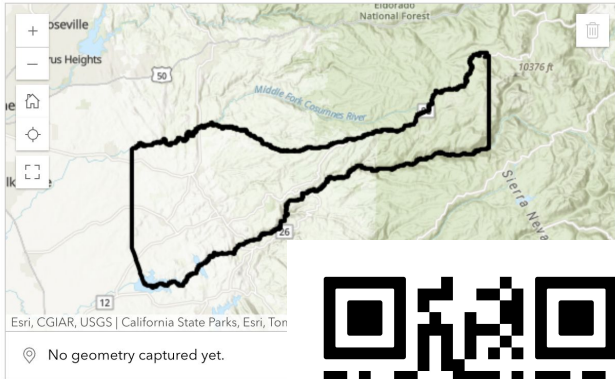
Community Participation Survey

Amador County Community Wildfire Protection Plan

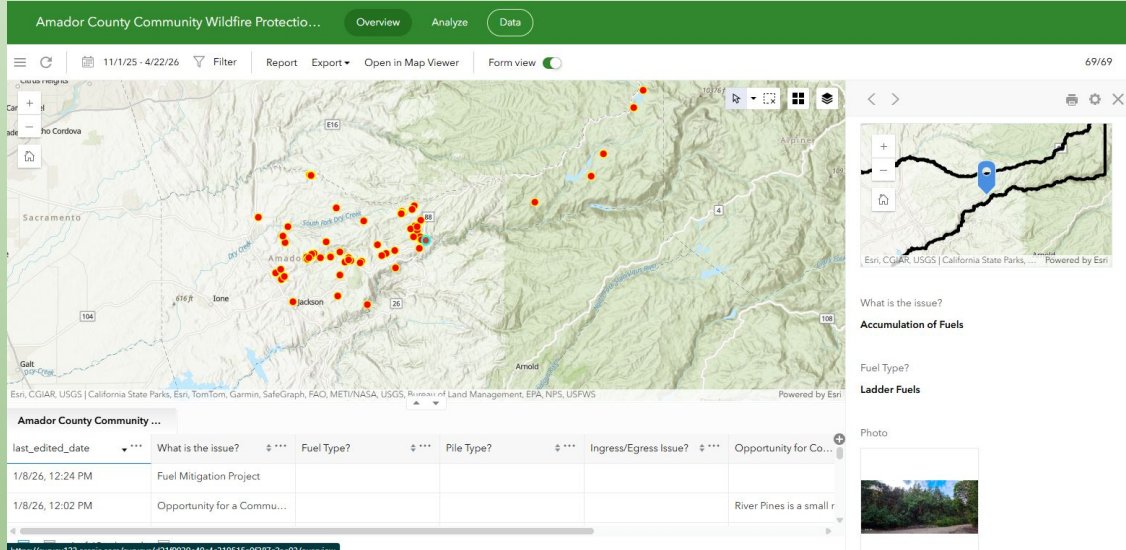
Welcome to the Community Participation Survey for Amador County Community Wildfire Protection Plan. This interactive map based survey enables members of the Amador County community to pinpoint areas of concern within the Project Study Area. By contributing your local knowledge, you play a vital role in helping planners develop effective wildfire protection strategies. [Please watch the short instructional video on how to use the survey before you begin.](#) Thank you for your participation!

Where is the issue?*

Right click to mark a location.



What is the issue?*



The screenshot shows the survey application interface. At the top, there are tabs for 'Overview', 'Analyze', and 'Data'. Below the tabs is a map of Amador County with several red circular markers indicating survey locations. A data table is visible below the map, listing survey entries.

last_edited_date	What is the issue?	Fuel Type?	Pile Type?	Ingress/Egress Issue?	Opportunity for Co...
1/8/26, 12:24 PM	Fuel Mitigation Project				
1/8/26, 12:02 PM	Opportunity for a Commu...				River Pines is a small r

Key Findings Part 1

- **Distinct Regional Hazard Profiles:** Amador County exhibits distinct wildfire fire behavior across its geography. Across the entire county, 83% of the area could experience flame lengths greater than 4 feet under severe weather scenarios, requiring mechanized suppression resources.
- **Vulnerability of Critical Assets:** The effects analysis indicates that agricultural lands, watersheds, forest vegetation, and the built environment (structures and utilities) face the highest potential for negative impacts from high-intensity wildfires.
- **Strategic Fuel Reduction is Essential:** Addressing the county's hazard requires a multi-scale vegetation management approach. This includes large-scale Forest Health projects to improve ecosystem resilience, strategically placed Shaded Fuel Break Networks to aid suppression operations, and Community-Scale Fuel Reduction treatments directly adjacent to WUI neighborhoods.
- **Critical Infrastructure and Response Gaps:** Critical needs identified include expanding emergency water supply and storage, establishing comprehensive GIS hydrant mapping, hardening communications and radio systems, and improving narrow, one-way ingress/egress routes to support both civilian evacuation and emergency responder access.

Key Findings Part 2

- **Primary Community Concerns:** Public engagement revealed that the accumulation of hazardous fuels is the top concern among residents. Furthermore, rising homeowner's insurance premiums and policy non-renewals have become primary drivers motivating residents to engage in mitigation efforts.
- **Home Hardening and Defensible Space:** Because structures are most vulnerable to ember intrusion and radiant heat during a wildfire, widespread implementation of defensible space (Zones 0, 1, and 2) and structural hardening (e.g., upgrading vents, roofs, and siding to Chapter 7A WUI Building Code standards) are critical priorities for reducing property loss.
- **Countywide Collaboration and Coordination:** Coordination among state and local fire protection districts and departments, land management agencies, utilities, local government and public service organizations is essential to making meaningful progress toward wildfire resiliency. The Steering Committee, Working Group and Stakeholder Group that guided the development of this 2026 Amador County CWPP will be drawn on to expand and strengthen the Amador County Wildfire Collaborators (ACWC) group, led by the AFSC County Coordinator.
- **Cross-jurisdictional Geographic Information System (GIS) Management:** Amador County requires personnel to manage a centralized GIS database essential to planning and monitoring treatments, emergency access and response resources across public and private jurisdictions.

Action Plan

- 31 High Priority Actions identified and listed
- Multiple levels: Individual, Local, State, and Federal entities involved
- Aligns with other regional plans including CAL FIRE’s 2025 Strategic Fire Plan Amador- El Dorado Unit and Amador County’s 2025 Local Hazard Mitigation Plan

CWPP Action Plan					
Action	Lead(s)	Timeframe	Resources Required	Metric for Success	Plan Goal
GOAL 1: Reduce the potential for catastrophic wildfires					
<i>Objective 1.1: Develop interagency collaboration for pre-fire planning and fire response</i>					
<i>Objective 1.2: Reduce fuel loads strategically</i>					
GOAL 2: Reduce risk to life and property from wildfires					
<i>Objective 2.1: Retrofit all structures to comply with current wildfire construction standards</i>					
<i>Objective 2.2: Improve Ingress/ Egress Awareness</i>					
<i>Objective 2.3: Public Education and Outreach</i>					
GOAL 3: Improve Landscape Resilience					
<i>Objective 3.1: Implement landscape-scale fuels reduction projects</i>					
<i>Objective 3.2: Sustainability maintain fire-safe landscapes</i>					
GOAL 4: Improve Governance and Legislation					
<i>Objective 4.1: Advocate to enhance support for wildfire mitigation and resiliency</i>					

Action Plan Examples

CWPP Action Plan

Action	Lead(s)	Timeframe	Resources Required	Metric for Success	Plan Goal
GOAL 1: Reduce the potential for catastrophic wildfires					
Objective 1.1: Develop interagency collaboration for pre-fire planning and fire response					
Coordinate on cross-boundary wildfire mitigation and resilience projects	AFSC	2026 and ongoing	County coordinator facilitates collaborative planning among local, state and federal agencies. CAFSC County Coordinator Grant. SNC RFFCP grant. Participating stakeholder agency staff time to prepare for, attend and follow up with meetings.	Number of agencies represented at quarterly (2026-2027) then annual (2028 and beyond) Amador Fire Mitigation Collaborators Group	3, 6, 4
GOAL 2: Reduce risk to life and property from wildfires					
Objective 2.1: Retrofit all structures to comply with current wildfire construction standards					
Home Hardening Assistance	AFSC, CAL FIRE AEU	2031	Grant funding. Agency staff capacity to administer home improvement reimbursement program. Coordinate with enhanced education and outreach.	Number of homes engaged in program. Percent of homes in High, Very High FHSV retrofitted. 2025 Strategic Fire Plan Amador- El Dorado Unit, pp. 34, 114.	1, 5, 6
Defensible Space Assistance	ARCD, CAL FIRE, All local fire agencies	2026 and ongoing	CAL FIRE Wildfire Prevention Grants, explore additional funding sources to sustain programs.	Number of households engaged in programs. 2025 Strategic Fire Plan Amador- El Dorado Unit, pp. 34, 113–114.	1, 5, 6

Action Plan Examples

CWPP Action Plan

Action	Lead(s)	Timeframe	Resources Required	Metric for Success	Plan Goal
Objective 2.3: Public Education and Outreach					
Collaborative planning with local community associations	All local fire agencies, AFSC, ARCD, CAL FIRE	ongoing	County general fund. SNC RFFCP, CAL FIRE Wildfire Prevention Grants, SNC Wildfire and Forest Resilience Grants.	Proportion of WUI covered by local wildfire preparedness and resiliency plans.	5, 3, 6
Enhance Public Education and Awareness of Natural Hazards and Public Understanding of Disaster Preparedness	AFSC	ongoing	CAFSC County Coordinator Grant. SNC RFFCP, CAL FIRE Wildfire Prevention Grants, SNC Wildfire and Forest Resilience Grants. Multi-agency staff time.	Number of outreach events offered. Number of participants attended. Number of outreach materials produced. 2025 Strategic Fire Plan Amador- El Dorado Unit, pp. 34, 117.	5, 3, 1
Development and support of Firewise Communities in Amador County	FWC, AFD, AFSC, all local fire districts	Ongoing	CAFSC County Coordinator Grant. SNC Regional Forest and Fire Capacity Program, CAL FIRE Wildfire Prevention Grants, SNC Wildfire and Forest Resilience Grants. County staff resources. Multi-agency staff time.	Number of Firewise Communities in good standing. 2025 Strategic Fire Plan Amador- El Dorado Unit, pp. 34, 95.	5, 3, 1

Priority Fuel Reduction Project Examples

Fuel Treatment Projects and Priorities					
Name	Location	Size	Method(s)	Status in 2026	Lead
Forest Projects Plan - Phase 1	El Dorado National Forest - Amador District	11,023 ac in-progress + 8,508 ac planned	Mechanical mastication, lop & scatter, pile & chip, ...	Active implementation	El Dorado National Forest, UMRWA
Mokelumne - Amador - Calaveras (MAC)	El Dorado National Forest - Amador District	Prioritized treatment areas within 225,000 ac planning area	Prescribed fire, mechanical mastication, lop & scatter, pile & chip, ...	Proposed, seeking funding mechanism(s)	El Dorado National Forest, UMRWA
Mokelumne Rim Fuel Break	First ridge above Mokelumne River from HWY 49, south of Jackson to Tiger Creek Fuel Break in Buckhorn. Bisected by existing Pine Acres Fuel Break.	500-750 ac	Mechanical mastication, hand treatment + chipping	Proposed, seeking funding mechanism(s)	AFSC, BLM
Amador Pines Forest Health	Amador Pines: between HWY 88 and Shake Ridge Road, Lockwood & Barton	Up to 1000 ac	Mechanical mastication, hand treatment + chipping, riparian restoration	Proposed, seeking funding mechanism(s)	ARCD, CAL FIRE
Mt. Crossman Community Fuel Break	Buckhorn / Barton	85 ac	Mechanical mastication, hand treatment + chipping	Planned, funding approved	AFSC, SNC

Additional Sections

Ignitability Measures for Critical Infrastructure

- Water Infrastructure
- Communications Infrastructure
- Electrical Infrastructure
- Road Infrastructure

Roles and Responsibilities for Critical Infrastructure Protection

- Infrastructure Owners and Operators
- Fire Agencies and Emergency Responders
- County and Local Governments
- State and Federal Agencies
- Utilities and Private Service Providers
- Community Organizations and Fire Safe Councils
- Amador County Wildfire Collaborators - coordination and CWPP implementation

Wildfire Response and Suppression Capabilities

- Emergency Water Supply and Infrastructure
- GIS, Mapping, and Decision Support
- Communications Systems Hardening
- Strategic Fuel Breaks and Landscape Treatments
- Ingress/Egress Improvements

Fiscal Resources

- Potential Grant Funding Sources

Participation at scale

Individual

Defensible Space &
Home Hardening

Land Management:
Range, Ag & Forestry

Need Help?

Defensible Space
(opens 5/13/26)

cost share programs

CA Forest
Improvement Program



Community

Firewise USA®

HOA's, Road Associations

Need Help?

Firewise coordinator
Emergency Preparedness

Ingress & Egress,
Community Fuel Breaks

Chipping *(opens fall 2026)*

County, State and Federal
agency coordination

Amador County Wildfire
Collaborators

- Outreach & Education
- Landscape-scale Shaded Fuel Break Network and Forest Health treatments
- Advocacy

Thank You!

**For more information about the
CWPP, contact AFSC:**

**Amanda Watson, amanda@amdorrcd.org
Todd Bertwell, todd@amadorrcd.org**