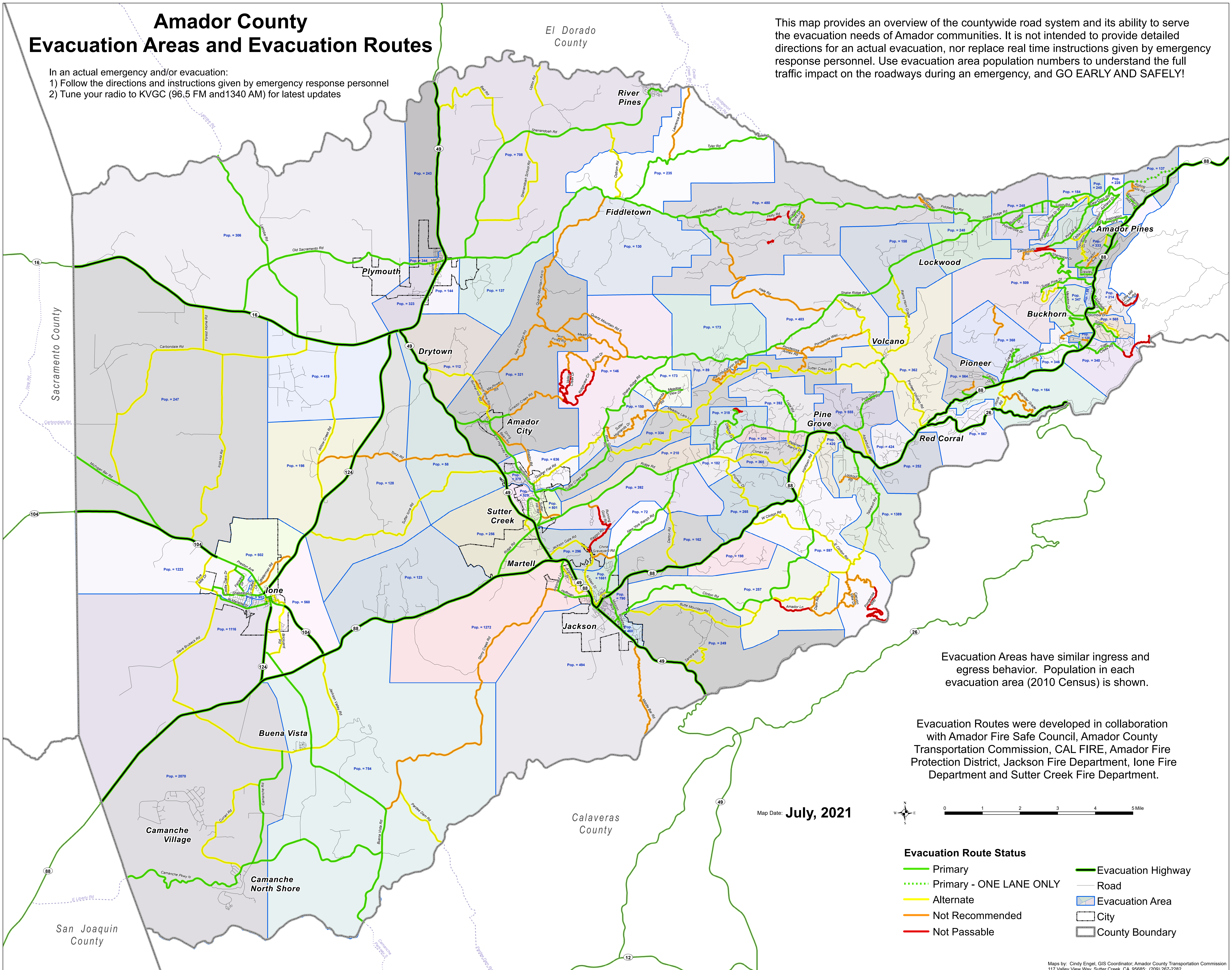


Amador County Evacuation Areas and Evacuation Routes

In an actual emergency and/or evacuation:
 1) Follow the directions and instructions given by emergency response personnel
 2) Tune your radio to KVGC (96.5 FM and 1340 AM) for latest updates

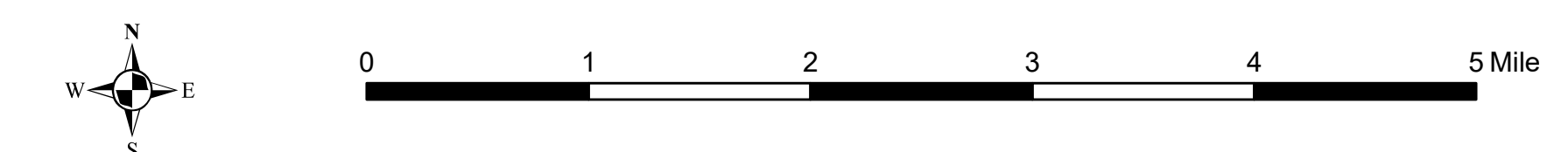
This map provides an overview of the countywide road system and its ability to serve the evacuation needs of Amador communities. It is not intended to provide detailed directions for an actual evacuation, nor replace real time instructions given by emergency response personnel. Use evacuation area population numbers to understand the full traffic impact on the roadways during an emergency, and GO EARLY AND SAFELY!



Evacuation Areas have similar ingress and egress behavior. Population in each evacuation area (2010 Census) is shown.

Evacuation Routes were developed in collaboration with Amador Fire Safe Council, Amador County Transportation Commission, CAL FIRE, Amador Fire Protection District, Jackson Fire Department, Lone Fire Department and Sutter Creek Fire Department.

Map Date: **July, 2021**



- Evacuation Route Status**
- Primary
 - ⋯ Primary - ONE LANE ONLY
 - Alternate
 - Not Recommended
 - Not Passable
 - Evacuation Highway
 - Road
 - Evacuation Area
 - City
 - County Boundary